



Floorplans

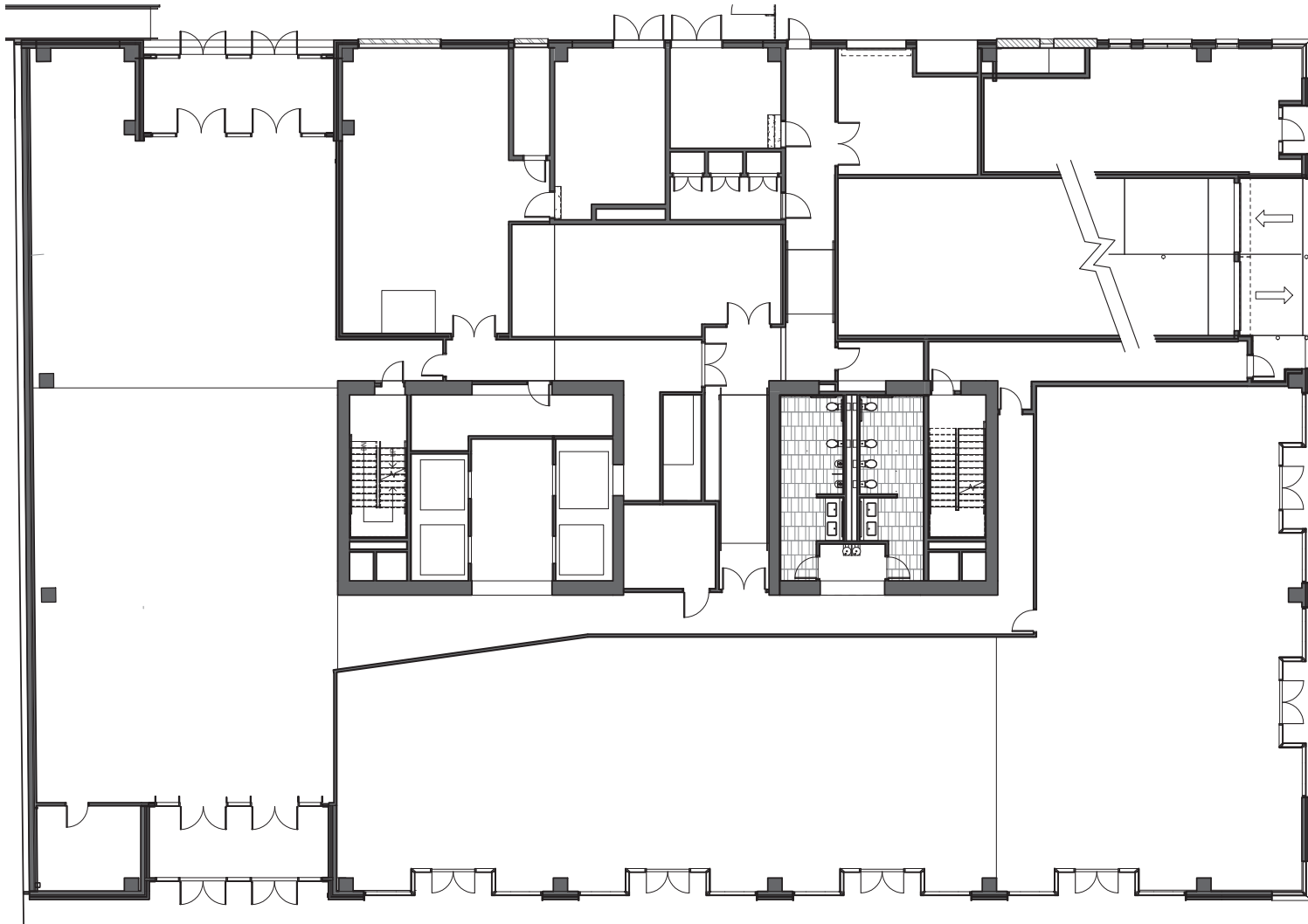
450ALASKAN.COM

450 /
ALAS
/ KAN

Floor

01

± 8,600 SF



Water Views  ↓



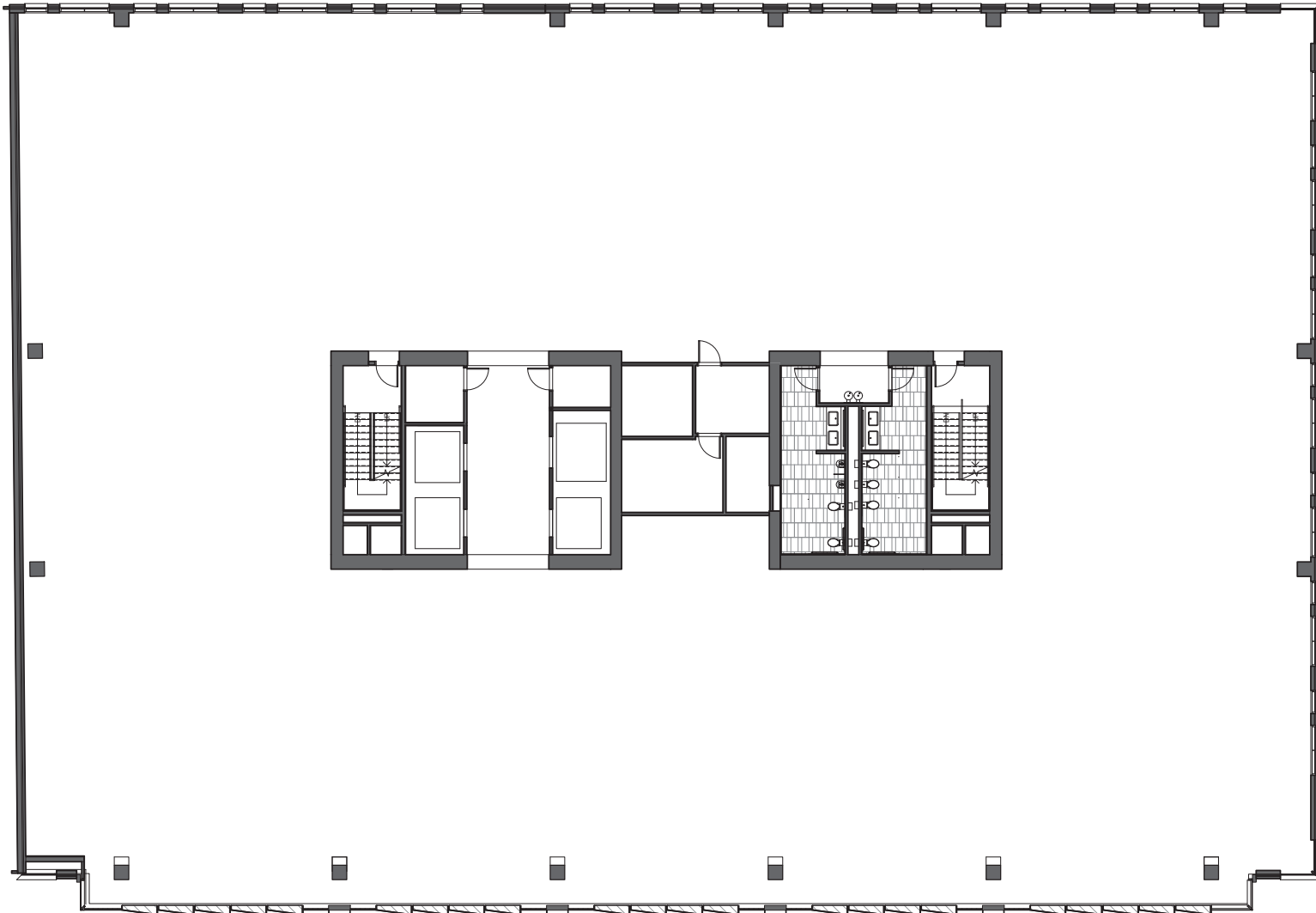
Floorplans

450ALASKAN.COM

450 /
ALAS
/ KAN

Floor

03 & 04 ± 23,000 SF



Water Views  ↓



Floorplans

450ALASKAN.COM

450/
ALAS
/KAN

Floor
04 ± 23,728 SF

Reception Area	1
Board Room	1
Huddle	5
Phone / Meeting	4
Open Meeting	2
Break Room / Kitchen	1
Workroom / Print Station	1
Workstations	162
Headcount	163
RSF	± 23,728
RSF/Employee	145



Water Views  ↓

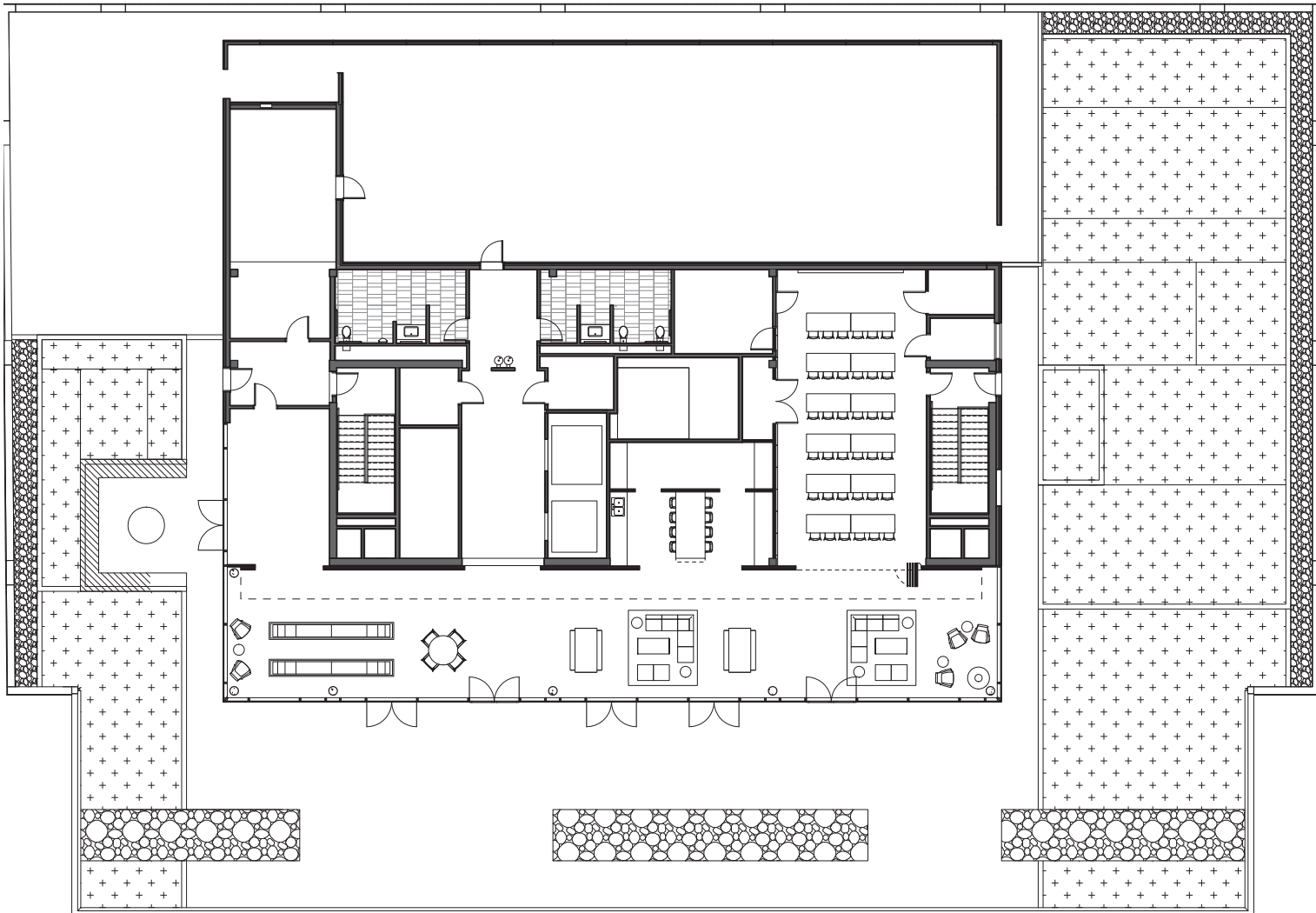


Floorplans

450ALASKAN.COM

450 /
ALAS
/ KAN

Floor
DECK



Water Views  ↓